



Passive networking solutions

Structured Cabling Solutions

- Data Center Solutions
- Campus networking
- FTTX Solutions
- OPGW Solutions
- Cable Management Solutions
- Fiber Management Systems
- Fiber Interconnect Products
- Optical Passive Products
- Opto-Electronic Components & Sub-Assemblies,
- Active Optical Cables
- FTTH Active Equipment

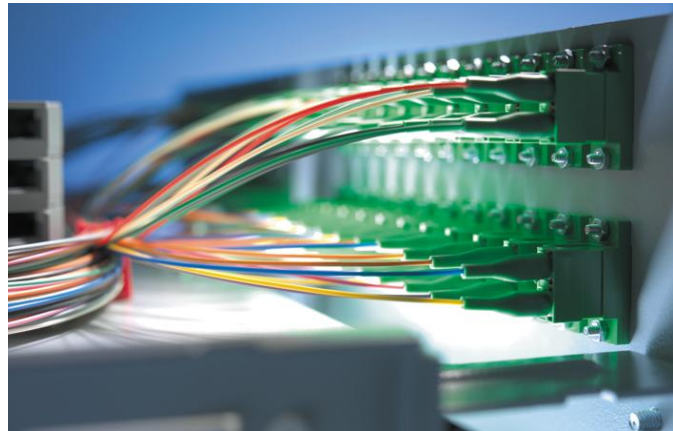
We take an individual approach to every customer and every network. Our engineering teams will support you to develop the right solution for individual network needs.

Our products meet and exceed the industry standards performance requirements

We offer rapid customization of cable and hardware solutions as a service to customers

All products, where relevant have passed third party laboratory safety requirements including UL certification

25 year product warranty provided to customers who utilize Certified Integrators



We deliver all physical layer technologies to provide end to end communications, supporting applications such as:

- Analogue and ISDN voice services
- Data communications, including e-mail,
- Video on Demand (VoD) and other web based Applications
- Real Time communications such as Voice over IP (VoIP), video conferencing and Unified Communications (UC)
- Intelligent building communications including security systems, monitoring of HVAC application



On Time Performance.
Enhance Customer Satisfaction
Improvement of Processes.
Cost Reduction

Manufacturing Infrastructure

World Class State-of-the-Art Technology.

manufacturing facilities in Digital Electronics, RF & Wireless, Optoelectronics, Cable & Wire Harness, Power Systems, Sheet Metal & Plastics.

Class 10,000 Clean Room.
Class 0 Human Body Model (200V) ESD protected area.

TL9000, ISO9001:2000, ISO14001:2004, ISO13485 certified.

Qualification/ Reliability Tests performed as per International Standards GR1209, GR1221, GR326 etc.,

CE, FCC, UL, ROHS, Flammability, EMI/EMC, ESD Compliance.

Design Centre: AutoCAD 2000 and Pro-E platform based design & prototype activities.

Software, VLSI Design, Embedded Solutions - CMM 1 L5 Methodology.